

Supplement to the agenda for

# General scrutiny committee

Tuesday 11 July 2017

10.30 am

The Council Chamber - The Shire Hall, St. Peter's Square,  
Hereford, HR1 2HX

<b>Presentations to General scrutiny committee – 11 July 2017</b>		<b>Pages</b>
<b>7.</b>	<b>PRESENTATION - SUSTAINABLE MODES OF TRAVEL TO SCHOOL STRATEGY</b>	<b>3 - 18</b>
<b>8.</b>	<b>PRESENTATION - HEREFORDSHIRE LOCAL FLOOD RISK MANAGEMENT STRATEGY</b>	<b>19 - 30</b>



General Scrutiny  
Committee 11<sup>th</sup> July 2017  
Sustainable Modes of  
Travel to School Strategy

Jeremy Callard  
Transportation Strategy Manager

# Sustainable Modes of Travel to School Strategy

(2017 refresh)

## Contents:

- Legal and policy context
- Vision and objectives
- Existing conditions and projects
- Strategy and action plan
- Targets and key performance indicators

# Legal and policy context:

- 2006 Education Act – assess, audit, strategy, promote, publish
- Home-to-school travel guidance DfE 2014 – data provided by schools, school travel plans.
- National Policies and strategies: Cycling and walking strategy, DfT (April 2017); Everybody active every day: PHE (October 2014)

5

- Local Policy: Corporate Plan 2016-2020: “Keep children and young people safe”. Health and Wellbeing Strategy: Ensure that children and young people are fit and well, including keeping all children safe. Local Transport Plan - Policy LTP SC3
- School Standards and Framework Act (1998) – parental choice.

# Vision:

*“To have a fully integrated transport system where every pupil within Herefordshire, where appropriate, has the option to travel to and from school through active travel choices, improving health, safety and reducing reliance on short distance car journeys”*

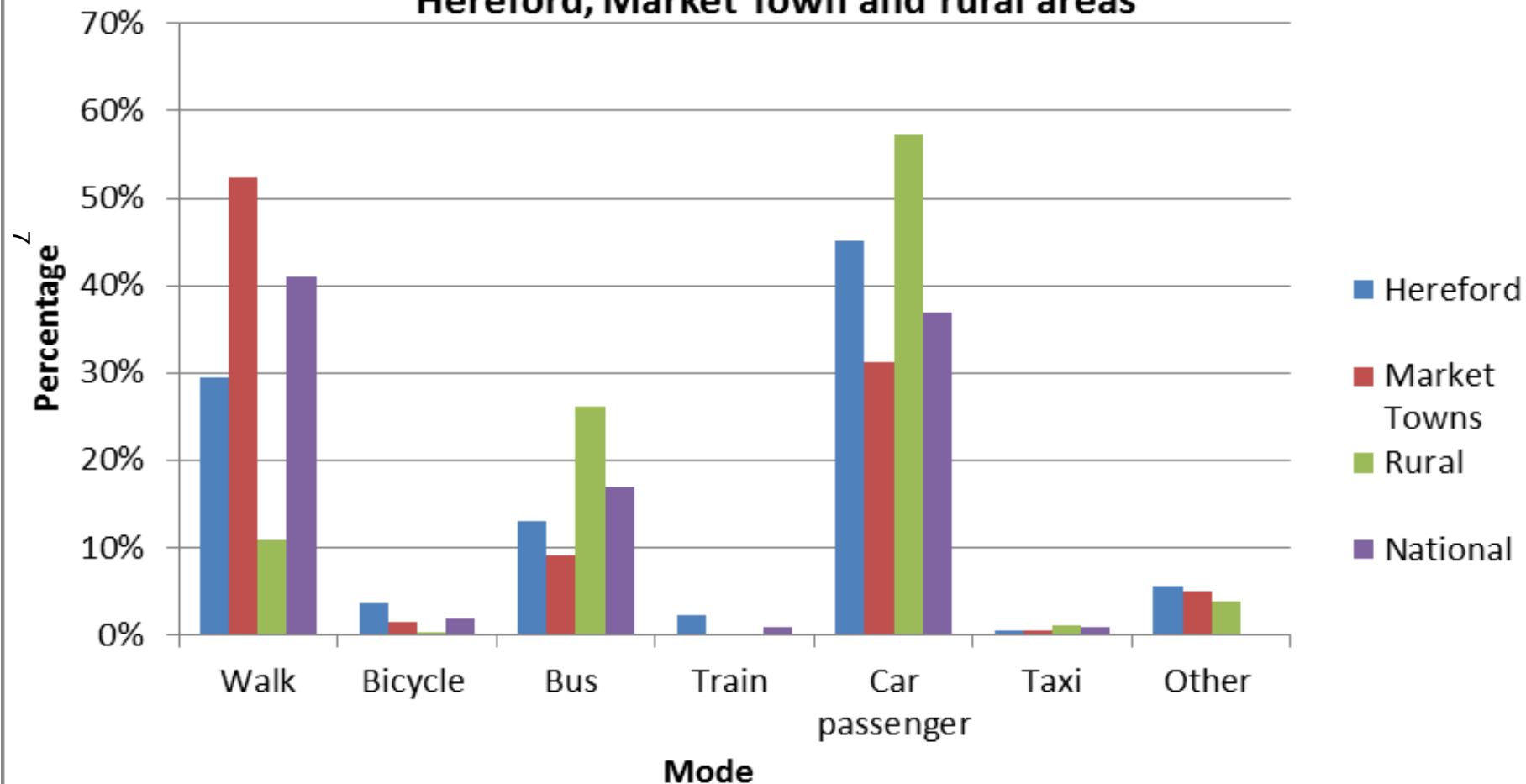
# Objectives:

- **To improve the safety of pupils and parents** - through targeted road safety initiatives to educate pupils and by delivering walking and cycling schemes near schools.
- **To improve the health and well-being of pupils-** promote the benefits of sustainable travel through delivery with our partners in public health.
- **To reduce congestion** - by encouraging and facilitating sustainable travel we will reduce car use.

# Existing conditions:

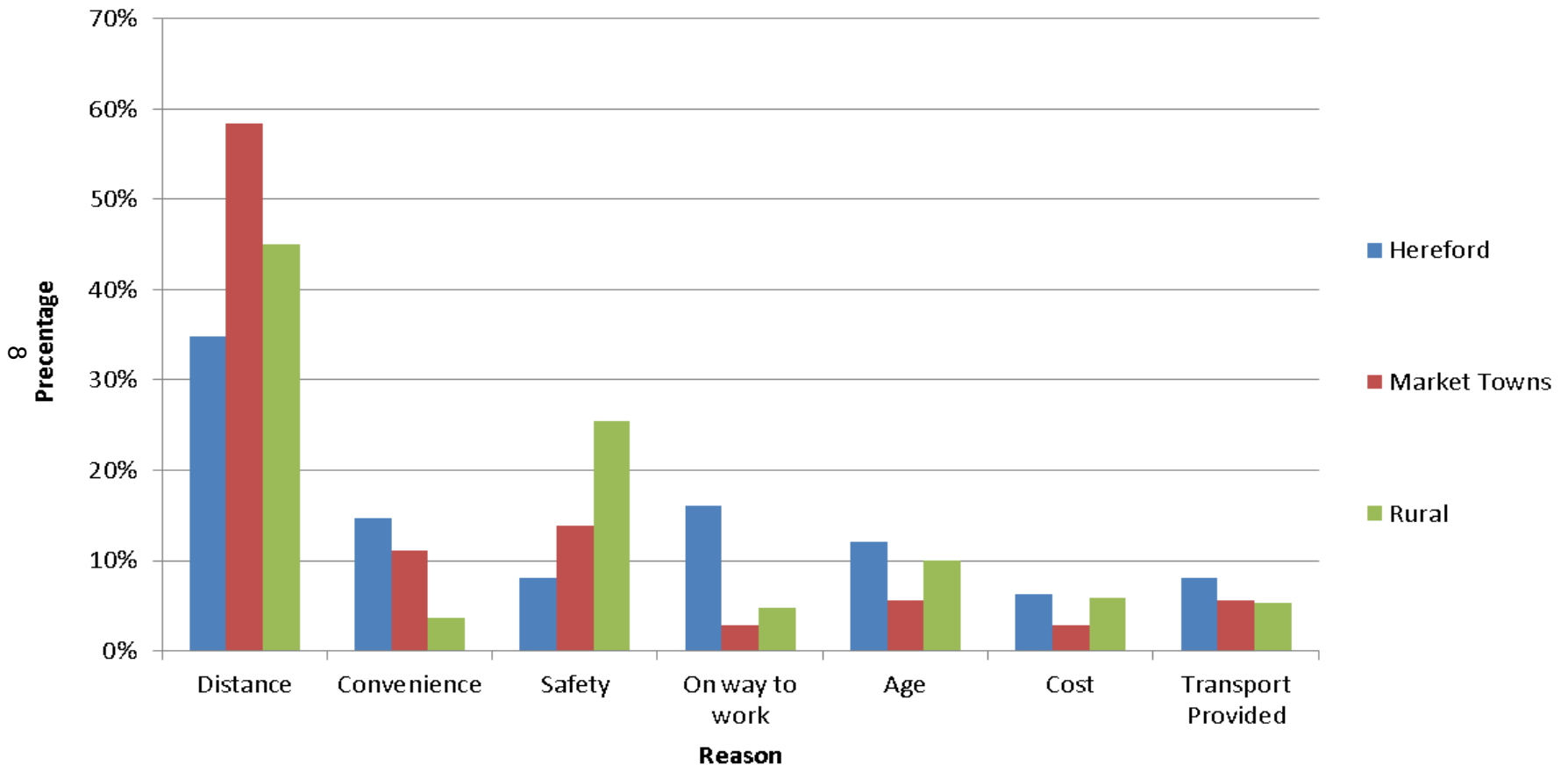
- Herefordshire – dispersed population and long travel distances.
- Data collection – travel survey, 1163 responses, 5.1% of pupils

**Modal shares for transport to and from school for National, Hereford, Market Town and rural areas**



# Existing conditions:

Please state the reasons for you / your child accessing the school using your current mode(s)?





## Existing conditions – Infrastructure and travel plans:

- 16 schools have 20mph limits in the immediate vicinity;
- 65 schools have zig-zag “School keep-clear” markings
- 14 zebra crossings, 15 pelican crossings and 8 toucan crossings;
- Cycle racks available at 75 schools;
- 17 schools have parent waiting shelters; and
- 14 schools have traffic calming measures.
- 81 schools (75%) out of the total (104) do not have a valid travel plan - 64 schools have a travel plan although 38 are out of date (>3 years old)

# Existing conditions:

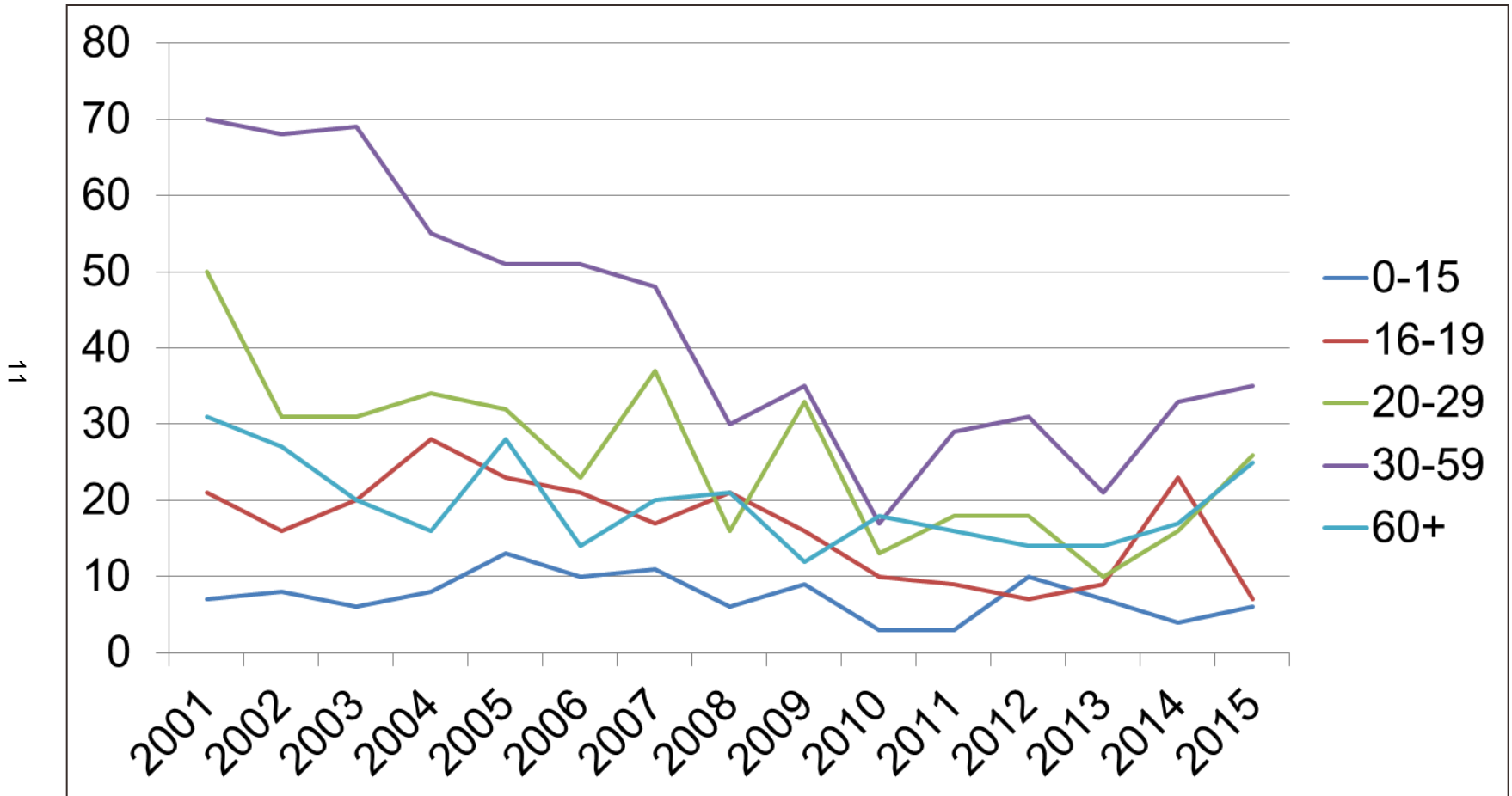
## Travel to school provision

- HC transport 3,318 pupils to school. Of these 284 are through our VSPS and 504 receive transport on grounds of hazardous routes
- 3,013 pupils receive free transport to school
- 15% of all pupils within Herefordshire are on local authority arranged transport, either through free transport or through the VSPS

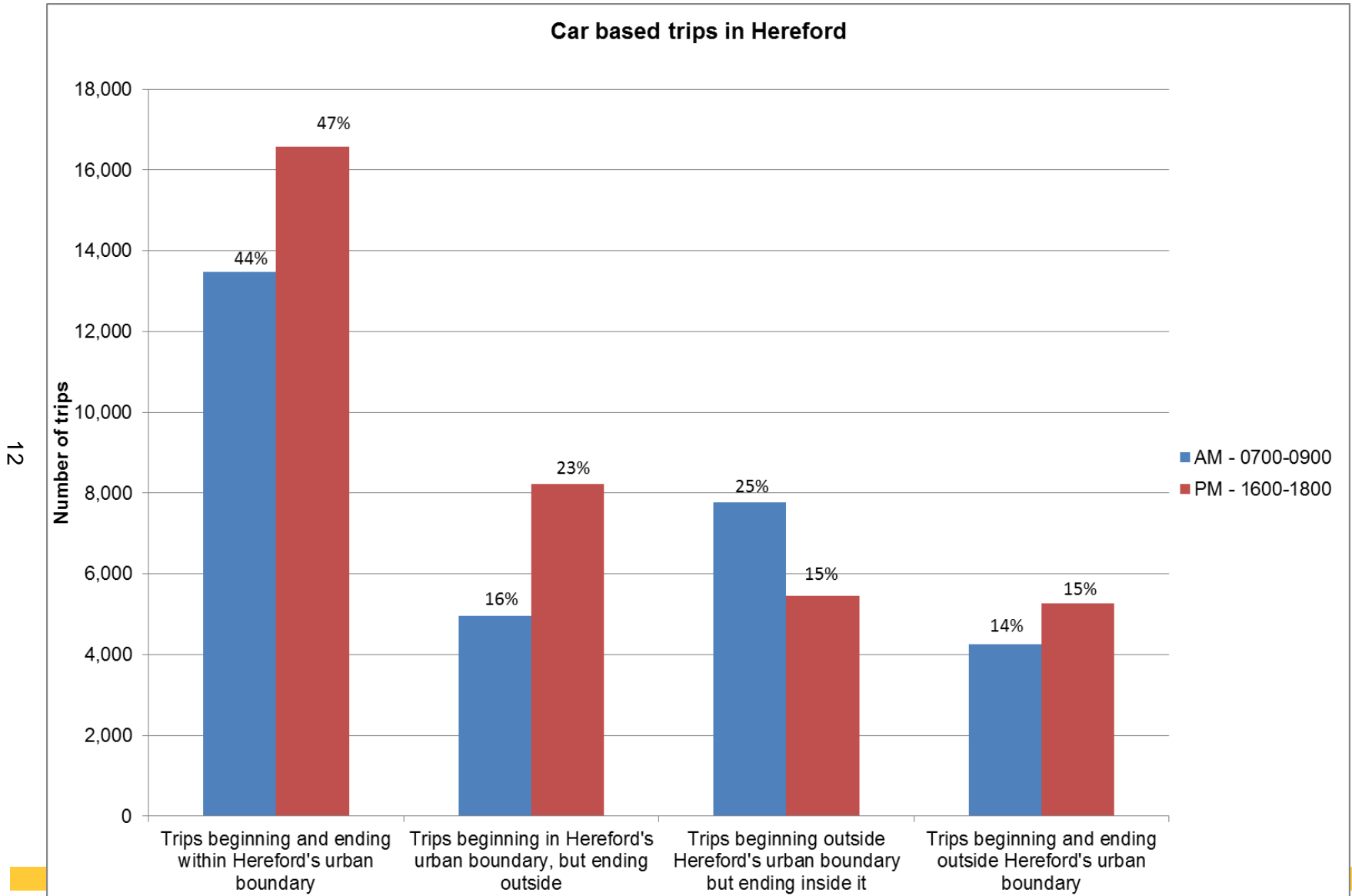
## Accidents and health

- In 2015/16, 22.8% of reception pupils were overweight with 9.8% obese (national 9.3%) .
- In year six 33.8% pupils were overweight with 19.8% obese (national 19.8%)
- The numbers of accidents in Herefordshire involving school age children is very low.

# KSI casualties in Herefordshire by age



# Term time short distance car journeys in Hereford



# Examples of school travel support:

- Bikeability – funded by DfT, ranges from the basics of balance and control to journey planning and independent travel.
- Road safety education - pupils in key stage one, year 6, year 7 and year 8
- Crucial Crew - aimed at year 6 pupils - personal safety including road, water and fire safety to key stage two pupils
- <sup>13</sup> Pre-driver and passenger event to year 11 pupils called Dying to Drive.
- School crossing patrols – 12 – 6 funded by HC
- Behavioural change projects funded by the Access Fund – Sustrans - bike and scooter skills, maintenance, bike clubs, walking initiatives, assemblies, class talks, integrating active travel within the curriculum and travel plan writing.
- Change4life initiative - PHE

# Infrastructure programming, delivery and funding – Action Plan:

- BBLP Annual Plan - consultation with county councillors and parish councils - locality stewards. Schemes in Neighbourhood Development Plans.
- S106 schemes funded by developers
- 14 • Transport Asset Management Plan
- Funding bids:
  - Revenue - LSTF Destination Hereford, Transition Fund, Access Fund
  - Capital – Hereford City Centre Transport Package, South Wye Transport Package, Hereford Transport Package, University City Transport package

# Targets and Monitoring:

- Mode share of pupils using sustainable modes of travel;
- Numbers of pupils overweight or obese;
- Number of schools with an up to date travel plan
- Number of casualties involved in traffic collisions aged 0-19 during the AM and PM peak
- Number of pupils engaged in road safety education programs
- Traffic volumes in term-time and non term-time.

51

# Next steps:

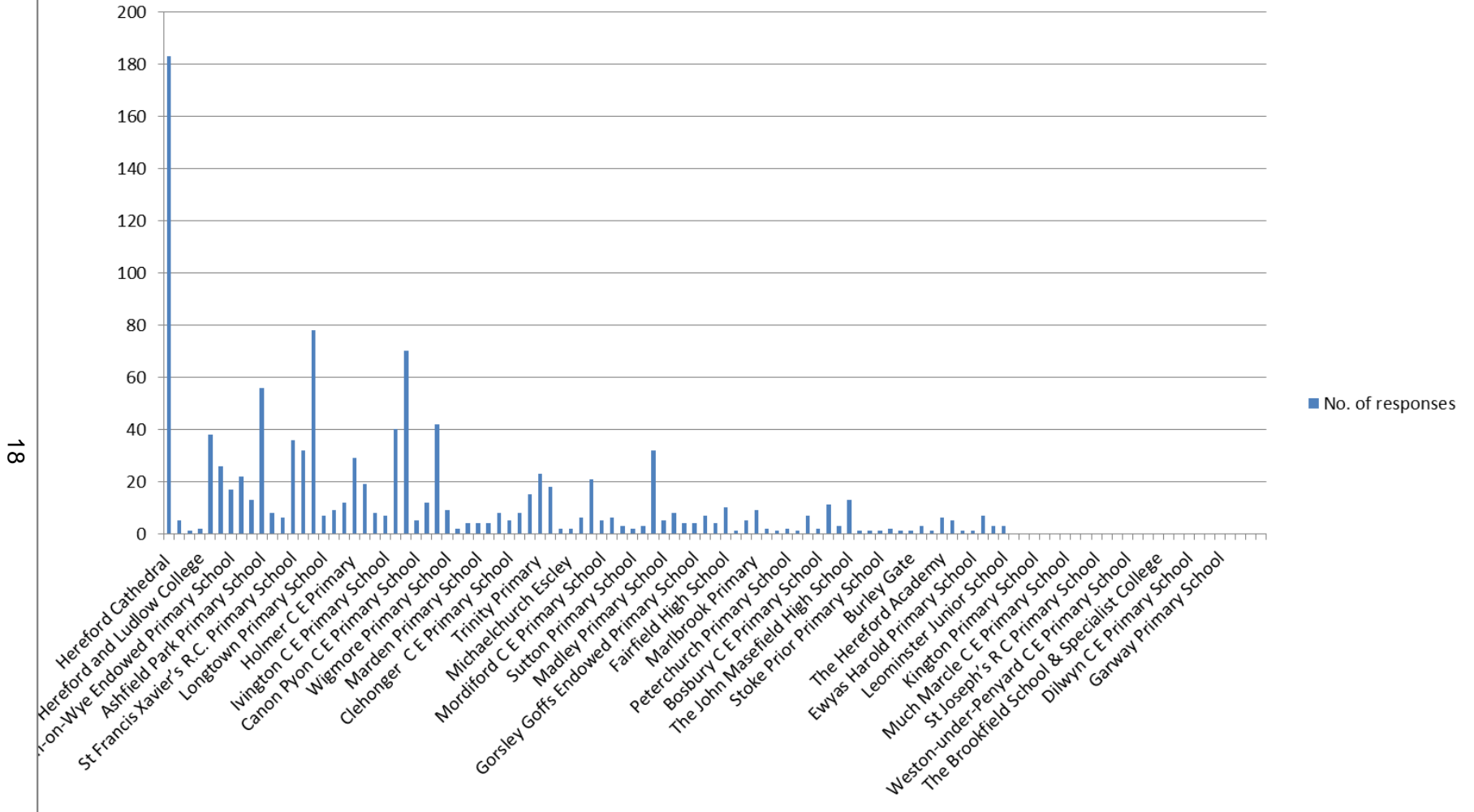
- Public/school consultation on draft SMOTS
- Review strategy in light of consultation responses
- Adoption later this year.



**Thank you**

17

## Number of responses to the questionnaire by school



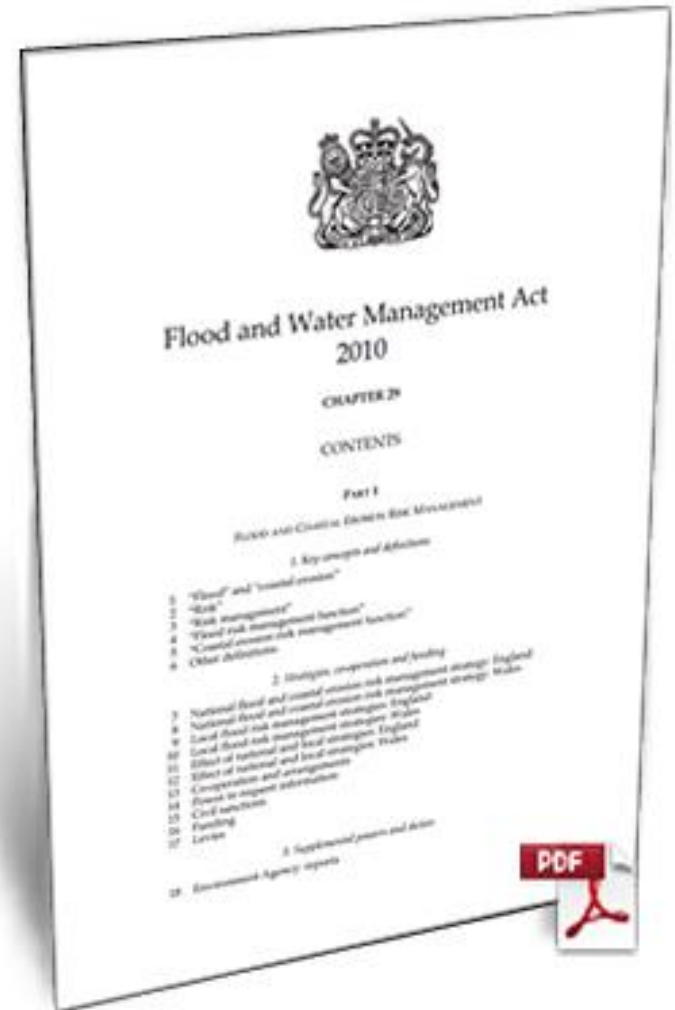
General Scrutiny  
Committee 11 July 2017  
Local Flood Risk  
Management

Steve Hodges  
Herefordshire Council

# Legal and policy context

- The council is a lead local flood authority (LLFA) and has powers and statutory duties to manage and co-ordinate local flood risk management activities
- We are responsible for overseeing the flood risk from ordinary watercourses, groundwater and surface water runoff

20



# The council's roles and responsibilities

Land drainage authority	Highway authority
Local planning authority	Emergency responder
Investigating flood incidents	Consenting for works on ordinary watercourses
Asset register	Designation powers
SuDS approving body	Works powers
Local Flood Risk Management Strategy	

21

# Flood risk in Herefordshire

- Some of the most notable events are listed below with the July 2007 floods as the most extensive and damaging

22

	<b>No. of residential properties affected</b>
<b>1998</b>	70
<b>2006</b>	20
<b>2007</b>	309
<b>2012</b>	124
<b>2014</b>	34

# Main types of flooding

These flooding mechanisms often occur at the same time and may interact with each other leading to combined impacts and requiring complex solutions:

- Pluvial (rain)
- Surface water
- Fluvial (river)
- Sewers
- Groundwater
- Reservoir



# Responsibilities

## Key flood risk management authorities in Herefordshire

24

Source of flooding	Environment Agency	Herefordshire Council	Welsh Water and Severn Trent Water	Internal Drainage Boards
Main rivers	✓			
Ordinary watercourses		✓		✓*
Surface water runoff		✓		
Highway assets		✓		
Public sewerage system			✓	
Groundwater		✓		
Reservoirs	✓			

\*IDB owned watercourses

All risk management authorities have a duty to co-operate and to share information in relation to their flood risk management functions



# Funding

- Local flood risk management and land drainage forms part of the Herefordshire Council and BBLP annual plan
- BBLP's work programme includes undertaking studies to access flood defence grant in aid (FDGiA) and local levy funding
- These grants will not fully fund all schemes – local contributions needed for many schemes to proceed
- Risk-based approach – targets resources/funding at those parts of the county that are most susceptible to flooding

25

# Local flood risk management strategy

We are required to develop, maintain, apply and monitor the strategy – its overall aim is to:

- Continue to improve understanding of flood risks within the county, both within the council and general public;
- Continue to reduce flood risk to communities and business within the county, through fair and transparent means; and
- Ensure good communication and coordination between the relevant risk management authorities for the management of flood risk.

# How will we manage local flood risk

The strategy is based on five principle objectives:

- Understand flood risks throughout Herefordshire;
- Manage the likelihood and impacts of flooding;
- Help the community help themselves;
- Manage flood warning, response and recovery; and
- Promote sustainable and appropriate development

27

# Public consultation

We sought feedback on:

- Our proposed objectives for the management of local flood risk across Herefordshire;
- The actions we have proposed to deliver our objectives; and
- Any other comments in relation to the local flood risk management strategy or local flooding in general

We received 18 responses:

- These were reviewed and addressed as appropriate and were taken into account in the preparation of the finalised strategy document

# Next steps



29

Present high level strategic document to Cabinet on 14 September 2017 for adoption

Prepare a non-technical summary (easy reference guide summary document)

Finalise an action plan that identifies a programme of work for reducing local flood risk within Herefordshire

**How can implementation of the local flood risk management strategy be enhanced?**

**Thank you**